

## Helping Hand-Me-Downs 2013 Annual Report

### A Message from the Executive Director

What a productive year for HHMD! I continue to be amazed by the support of our community and the commitment of our volunteers. Last year, volunteers generously donated over 1,000 hours to help us serve families in need. Over 90% of the clothing distributed was donated by Carousel Kids, The Stork Lady, Just Between Friends, Kangaroo Kids and Purple Cow. It's hard to believe that we once bought from Goodwill to meet the needs of the families we serve.

Thank you, St. Louis, for rallying to help carry out our mission!  
- Stephanie Williamson, Founder & Executive Director, HHMD

### Our Team

Stephanie Williamson - Executive Director, HHMD  
 Kelly Naimo - President (Equifax)  
 Nate Kennedy - Vice President (Aegion)  
 Ally Vesper - Secretary (HHMD Volunteer)  
 Jessica Lindhorst - Treasurer (Stifel Nicholas)  
 Roz Kohen - Member (St. Louis Public Library)  
 Dennis O'Brien - Former President & Current Member  
 Lisa Pine - Member (U.S. Soybean Export Council)  
 Eliza Simington - Member (City Design Group Inc.)

### What We Do

Helping Hand-Me-Downs (HHMD) collects donations of gently-used children's clothing, supplies, and baby gear from local families and resale shops. These items are then sorted by size and gender and distributed to St. Louis families in need utilizing a network of licensed social workers and nurses.

### Distribution Totals from 2013

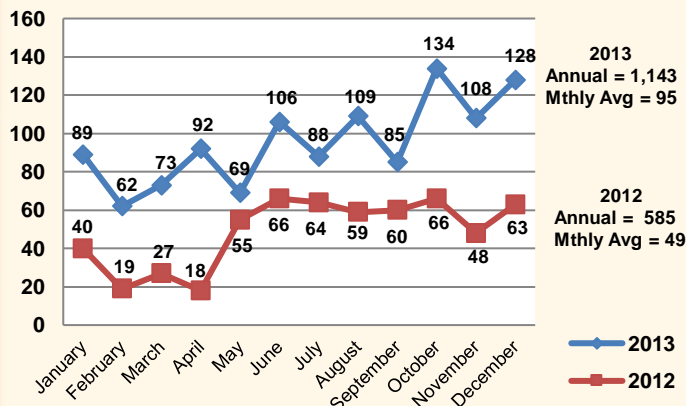
- ★ 1,143 Children & Families Served
- ❖ 47,677 items of clothing
- ❖ 8,655 diapers
- ❖ 1,590 books
- ❖ 1,219 toys

### Looking Ahead – Goals for 2014

- ❖ Serve 1,500 children and families
- ❖ Implement a family coaching program
- ❖ Secure a permanent operations facility

## Helping Hand-Me-Downs 2013 Annual Report

### HHMD Children & Families Served



### Grants Received in 2013

Spirit of St. Louis (SOS) Women's Fund: \$10,000  
 Barnes Foundation: \$8,000  
 Gaylord Foundation: \$5,000  
 Soroptomist Int'l of Greater St. Louis: \$2,000

### Financials for 2013

#### Income Statement

<b>Income</b>		
Corporate Contributions		\$5,075.00
Donated Facilities		\$9,333.33
Gifts In Kind		\$25,000.00
Special Events		\$5,473.35
Grants		\$25,000.00
Individual Contributions		\$3,797.80
<b>Total Income</b>		<b>\$73,679.48</b>
<b>Expenses</b>		
Program (85%)		\$59,122.29
Management (9%)		\$5,947.48
Fundraising (6%)		\$3,811.94
<b>Total Expenses</b>		<b>\$69,381.31</b>
<b>Net Income</b>		<b>\$4,298.17</b>

#### Statement of Cash Flows

Beginning Balance	\$3,245.09
Ending Balance	\$7,543.26
Net Income	\$4,298.17

#### Balance Sheet

Assets	\$7,543.26
Operating Balance	\$3,245.09
Net Income	\$4,298.17
<b>Total Equity</b>	<b>\$7,543.26</b>



**Families Helping Families**  
**Helping Hand-Me-Downs provides**  
**clothing and supplies to children in**  
**need and support to their families.**

## Helping Hand-Me-Downs 2013 Annual Report

## Helping Hand-Me-Downs 2013 Annual Report

### *Thoughts from those we've served...*

"I have worked with numerous agencies over the past fifteen years and I have never before witnessed such promise and dedication in an agency."

- Social Worker, SSM St. Mary's Health Center

"I am so thankful for Helping Hand-Me-Downs. The items I received are truly a blessing and I appreciate everything they have done for me. Thank you."

- Mother in 2013

"Helping Hand-Me-Downs is my little angel. They helped me feed and clothe my 18-month old grandson when I needed it the most."

- Grandmother in 2012

